



# NO WAY OUT

The Ultimate Guide to Claustrophobic Thrillers.

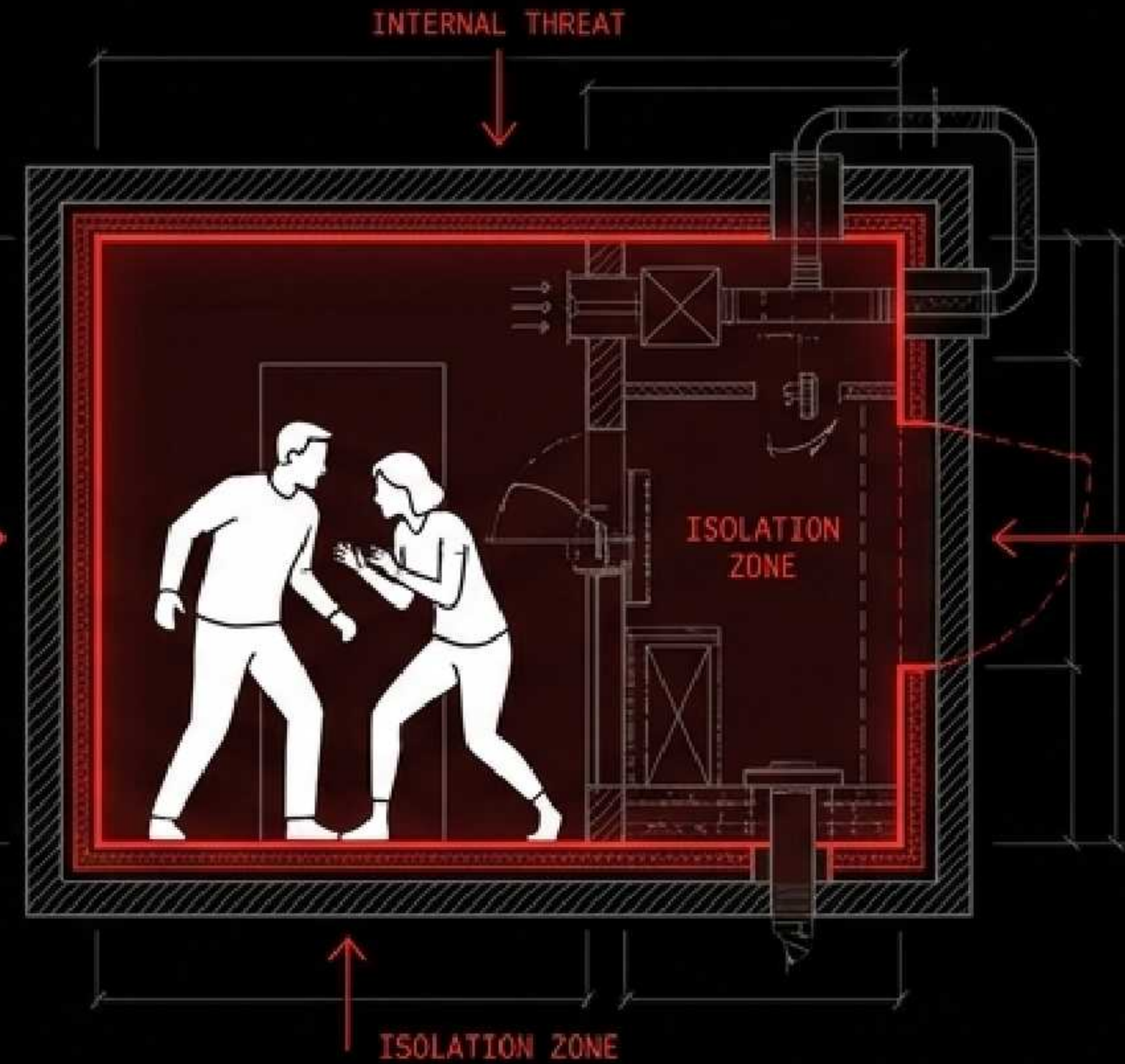
Take a deep breath. It might be your last.

THREAT VECTOR: UNKNOWN  
EXTERNAL PERIMETER: BREACHED

SIGNAL LOSS  
DITRESS LOSS

THREAT VECTOR:  
UNKNOWN  
EXTERNAL PERIMETER:  
BREACHED  
SIGNAL LOSS  
...  
DANGER: CRITICAL LEVELS

INTERNAL  
THREAT



# THE MONSTER IS INSIDE WITH YOU.

We think we fear the dark outside. We don't. The real terror hits when you lock the door, turn around, and realize you are trapped with the threat. Isolation strips away our masks. The polite smiles vanish. Survival instincts take over.



# THE ANATOMY OF A TRAP.

ENVIRONMENTAL BARRIER  
(BLIZZARDS, THE VOID OF SPACE, 20 FEET OF DIRT)

THE TRAP

THE BREAKING POINT

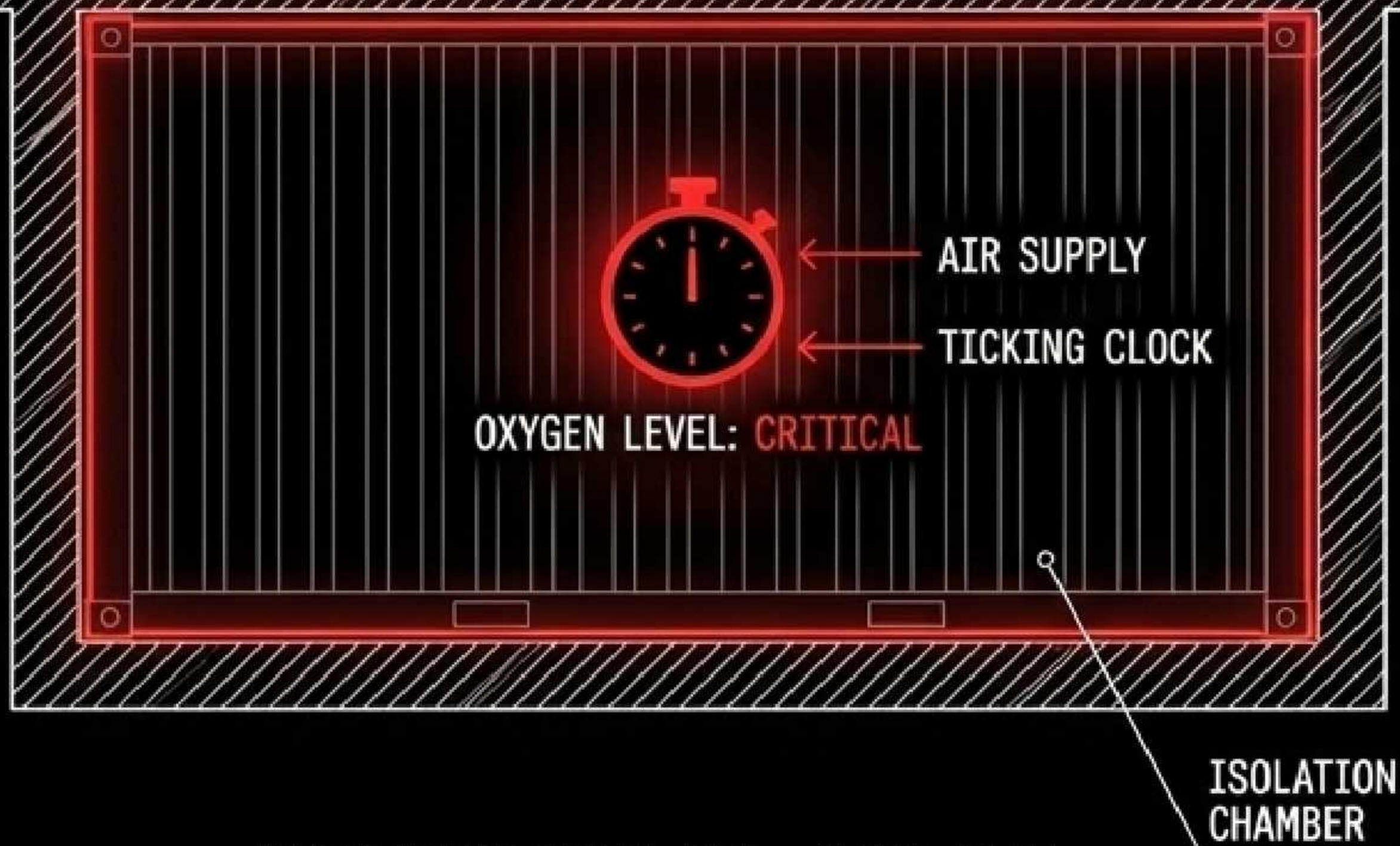
INTERNAL PROXIMITY  
(THE KILLER, THE CULT,  
THE BILLIONAIRE)

THIS IS THE FORMULA FOR PERFECT PANIC.  
NO CELL SERVICE. NO EXIT. NO RESCUE.  
THE SETTING DOES HALF THE HEAVY LIFTING  
BY TRAPPING THE PREY. THE REST IS JUST  
HUMAN NATURE TURNING TOXIC UNDER PRESSURE.  
LET'S LOOK AT THE BEST NEW TRAPS HITTING  
THE SHELVES.

# SUCH QUIET GIRLS

By Noelle Ihli

TWENTY FEET OF SOIL



SUBTERRANEAN BURIAL SITE - DEPTH: 20 FT.

## THE THREAT:

Running out of air.

## THE CLAUSTROPHOBIA:

A rusted shipping container buried twenty feet underground. You can't stand up. You can't see.

## THE STORY:

Ten kidnapped kids and one desperate bus driver named Jessa are trapped in the dark. Inspired by a real 1976 mass abduction, this is a literal fight against the clock as oxygen levels plummet. Your chest will feel tight reading this one. It's a masterclass in pure, unadulterated panic.

# THE CRASH

By Freida McFadden



## THE THREAT:

A "rescuer" who refuses to let you leave.

## THE CLAUSTROPHOBIA:

A locked basement in rural Maine during a raging blizzard. You are eight months pregnant. You have a broken ankle. You cannot run.

## THE STORY:

After a car crash, Tegan is saved by a couple who offer her shelter. But the storm isn't clearing, and the basement door locks from the outside. Completely dependent on a woman suffering from deep psychosis who wants her unborn child, this is domestic misery-horror on steroids.

# THE COMPOUND

By S.A. Bodeen

## THE THREAT:

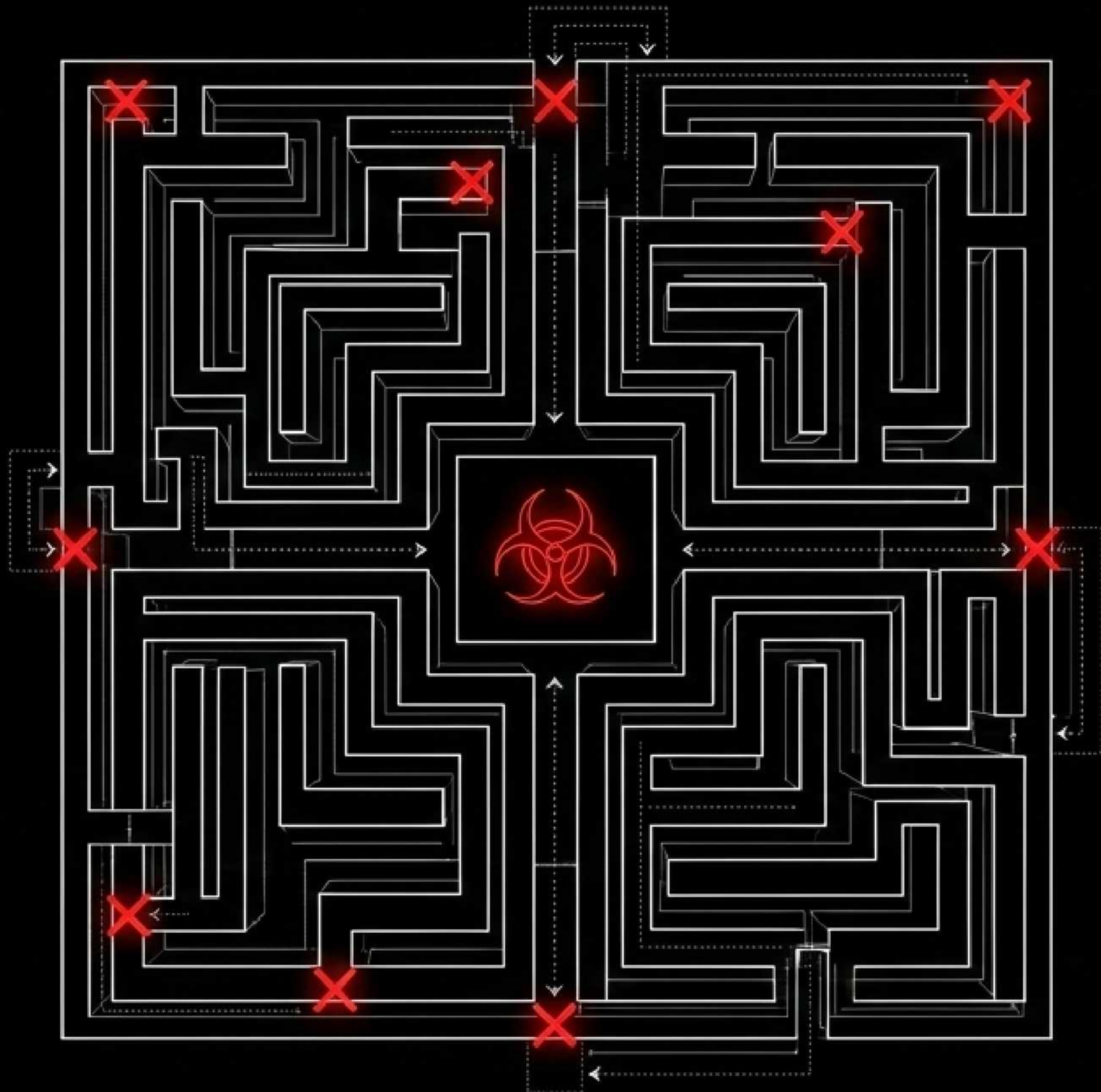
Your own billionaire father.

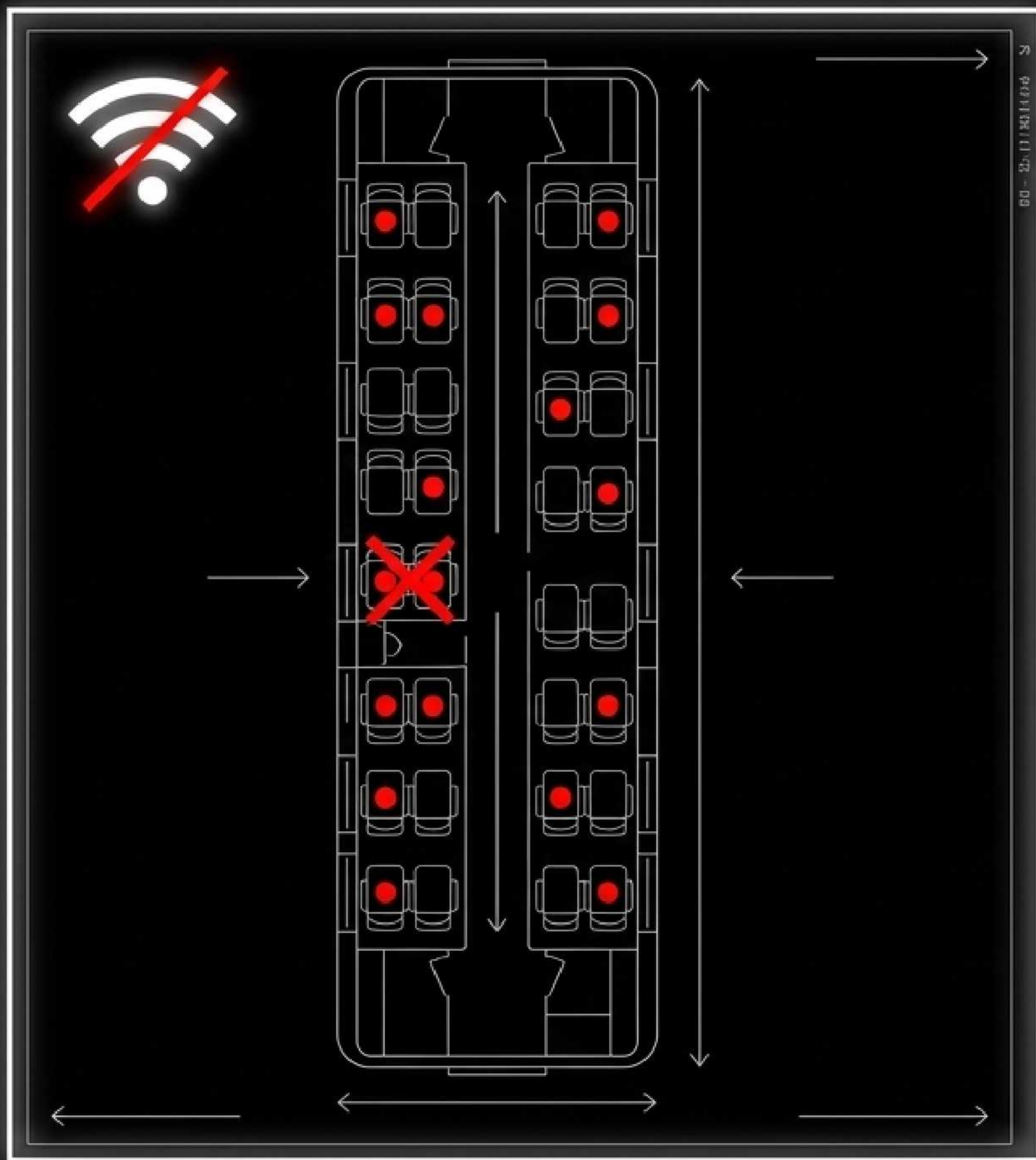
## THE CLAUSTROPHOBIA:

A luxury underground bunker meant to keep the nuclear apocalypse out. But what if the apocalypse was a lie?

## THE STORY:

Eli's father built an underground empire to survive the end of the world. Fifteen years later, the food is running out. The real horror? The billionaire patriarch bred additional children just to serve as emergency food "supplements." Twisted family dynamics at their absolute darkest.





# 6:40 to Montreal

By Eva Jurczyk

## THE THREAT:

A killer hiding in plain sight.

## THE CLAUSTROPHOBIA:

A stalled first-class train car in the frozen Canadian wilderness. The power dies. The Wi-Fi drops. You cannot step outside.

## THE STORY:

A passenger quietly dies in their seat. Novelist Agatha St. John is trapped with five strangers, a rival influencer, and a murderer. The temperature is dropping. It's an incredibly tense locked-room setup injected with biting, modern paranoia.

# COLD ETERNITY

By S.A. Barnes

## THE THREAT:

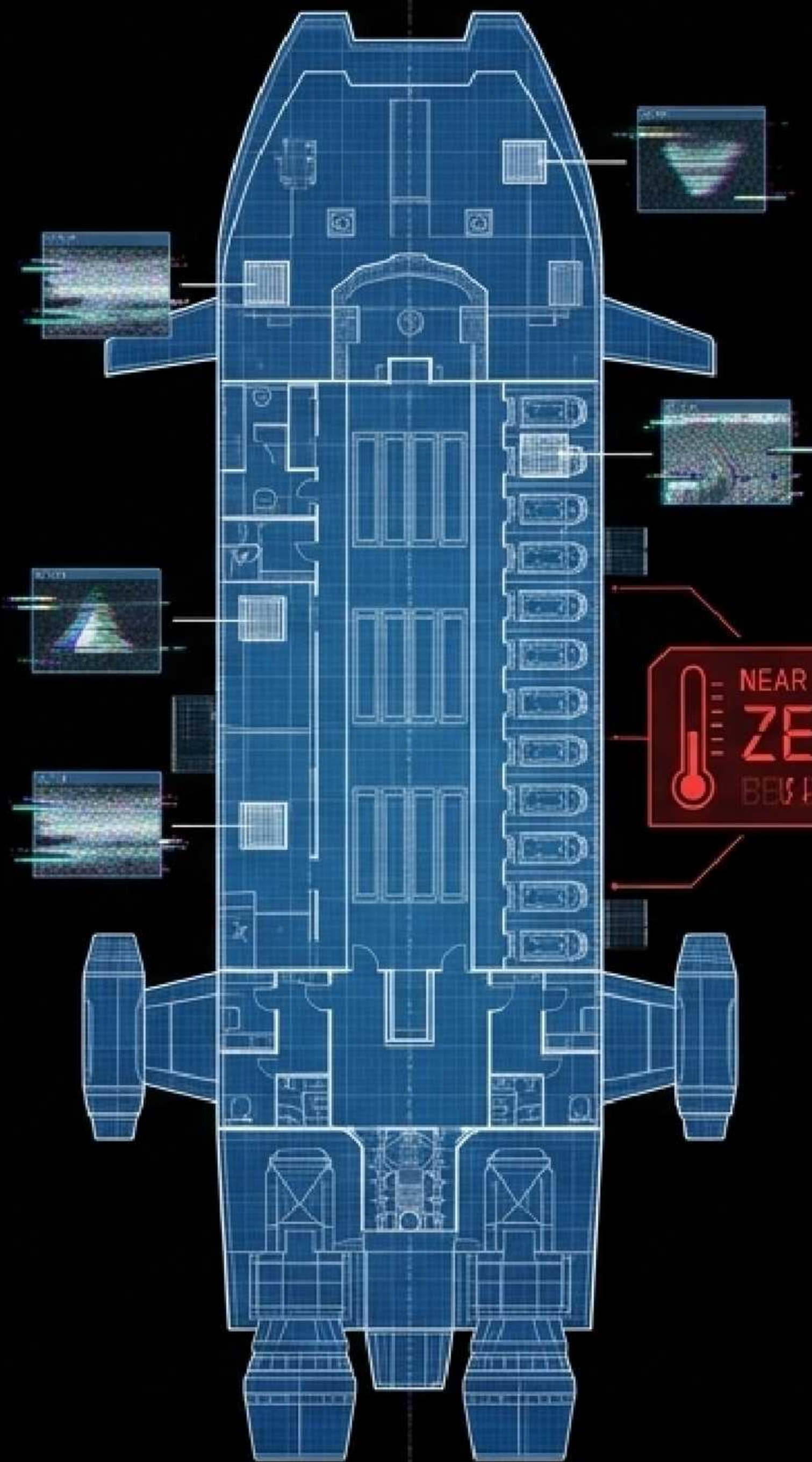
Whatever is scraping around in the air vents.

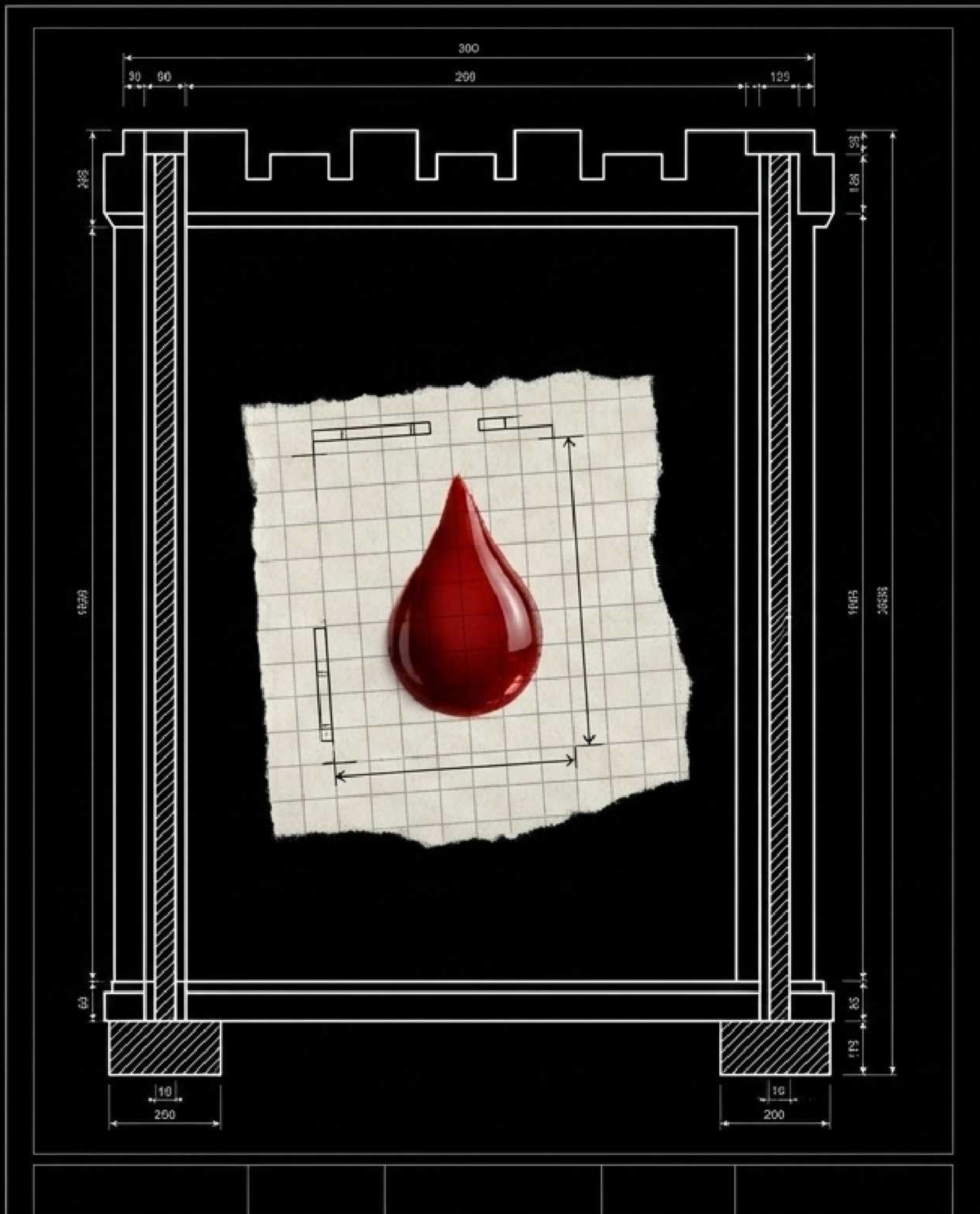
## THE CLAUSTROPHOBIA:

The deep void of space. You are the lone caretaker on a decaying barge filled with cryogenically frozen billionaires.

## THE STORY:

Halley takes a custodial job to hide from a political scandal. But sleep deprivation kicks in. The ship's AI holograms are glitching. And she isn't alone. This is creeping, isolation-induced space horror that will make you want to leave the lights on forever.





# THE UNWORTHY

By Agustina Bazterrica

## THE THREAT:

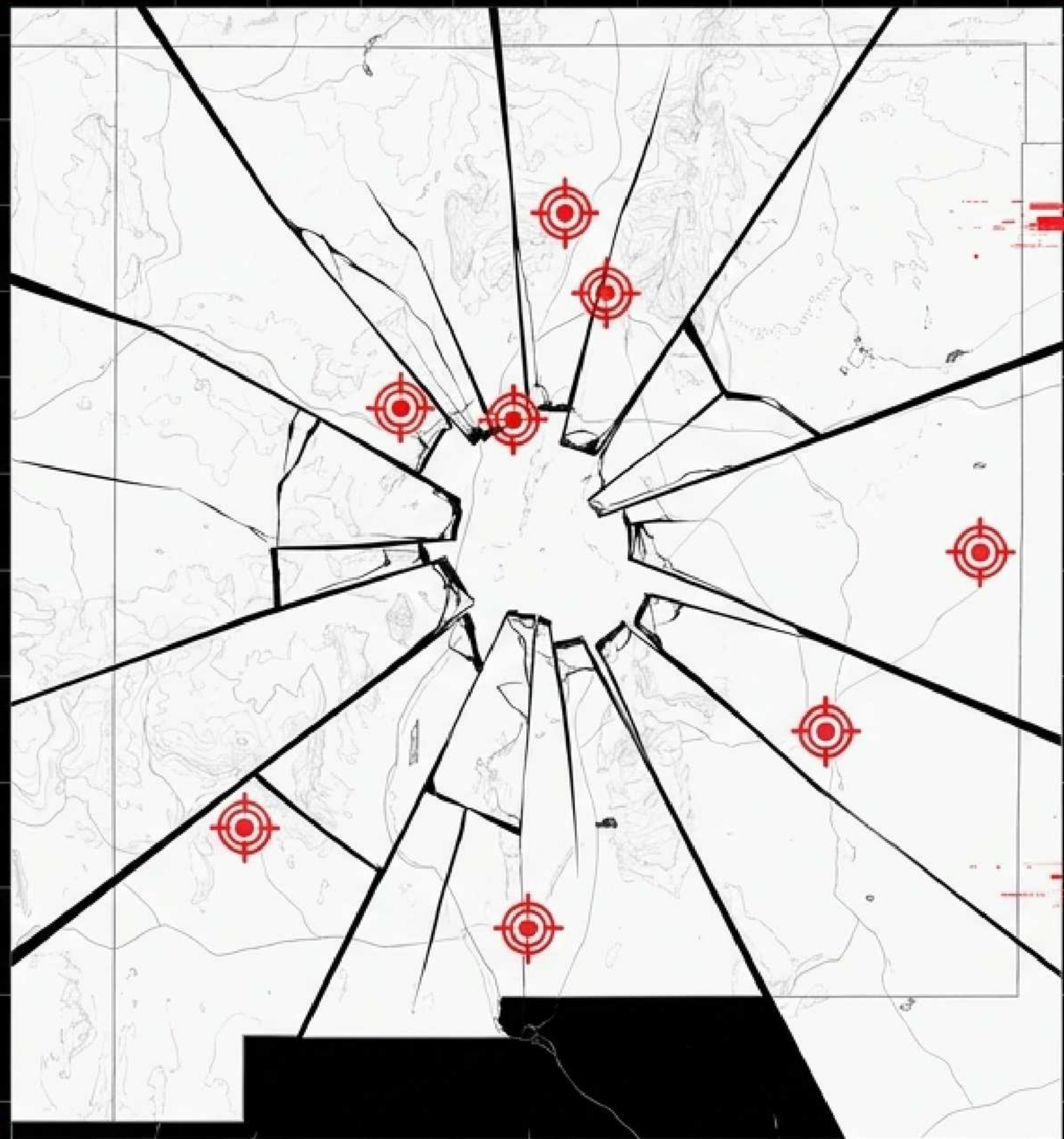
A sadistic cult built on absolute patriarchal control.

## THE CLAUSTROPHOBIA:

A secretive religious convent walled off from a flooded, ruined world. The punishments are brutal. You have no name.

## THE STORY:

The patriarchal leader is unseen. The Superior Sister demands ritual mutilation. Our unnamed narrator writes her desperate story in secret using dirt and her own blood. This is a brilliant, unflinching feminist horror masterpiece that makes the apocalyptic wasteland outside look inviting.



# THE LAST SESSION

By Julia Bartz

## THE THREAT:

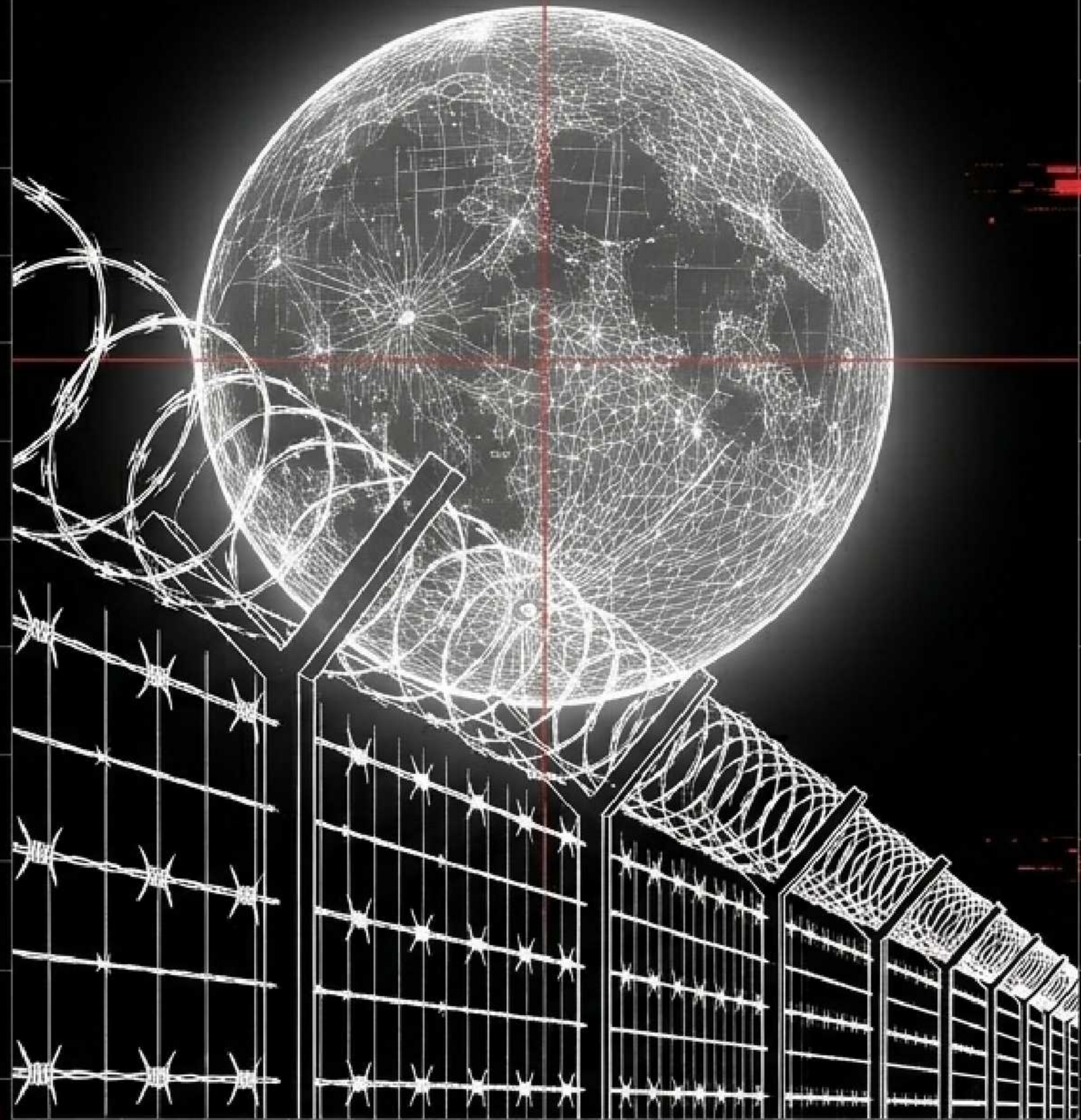
Forced vulnerability and systematic brainwashing.

## THE CLAUSTROPHOBIA:

A remote wellness retreat in the New Mexico desert. You cannot leave until the therapy is complete.

## THE STORY:

Social worker Thea goes undercover to find a missing patient. She's trapped in increasingly invasive 'intimacy exercises' run by a charismatic couple. It's a hallucinatory fever dream that completely blurs the line between a healing sanctuary and a lethal cult.



# ON EARTH AS IT IS BENEATH

By Ana Paula Maia

## THE THREAT:

A rogue warden armed with a hunting rifle.

## THE CLAUSTROPHOBIA:

A remote penal colony built on cursed land where the justice system has completely rotted away.

## THE STORY:

Escape isn't an option; survival is just a game. Every full moon, the sadistic warden releases two prisoners into the wilderness and hunts them for sport. A spare, visceral exploration of raw power and corruption.

# CHOOSE YOUR CONFINEMENT

Takes the guesswork out of picking your next nightmare. Do you want to fight the elements, the unknown, or a toxic human? Find your match.

	Such Quiet Girls	The Crash	Cold Eternity	The Unworthy
Setting Type	Shipping Container	Rural Basement	Space Barge	Walled Convent
Primary Threat	Suffocation	The Rescuers	Unknown Entity	The System
Oxygen Supply	Ticking Clock	Plentiful	Monitored	Irrelevant
Escape Probability	Near Zero	Requires Violence	Impossible	Fatal

# READ AT YOUR OWN RISK

## Tier 1: Sweaty Palms

6:40 to Montreal, The Last Session  
Tense, twisty, locked-room puzzles.  
You'll survive the night.

## Tier 2: Heart Palpitations

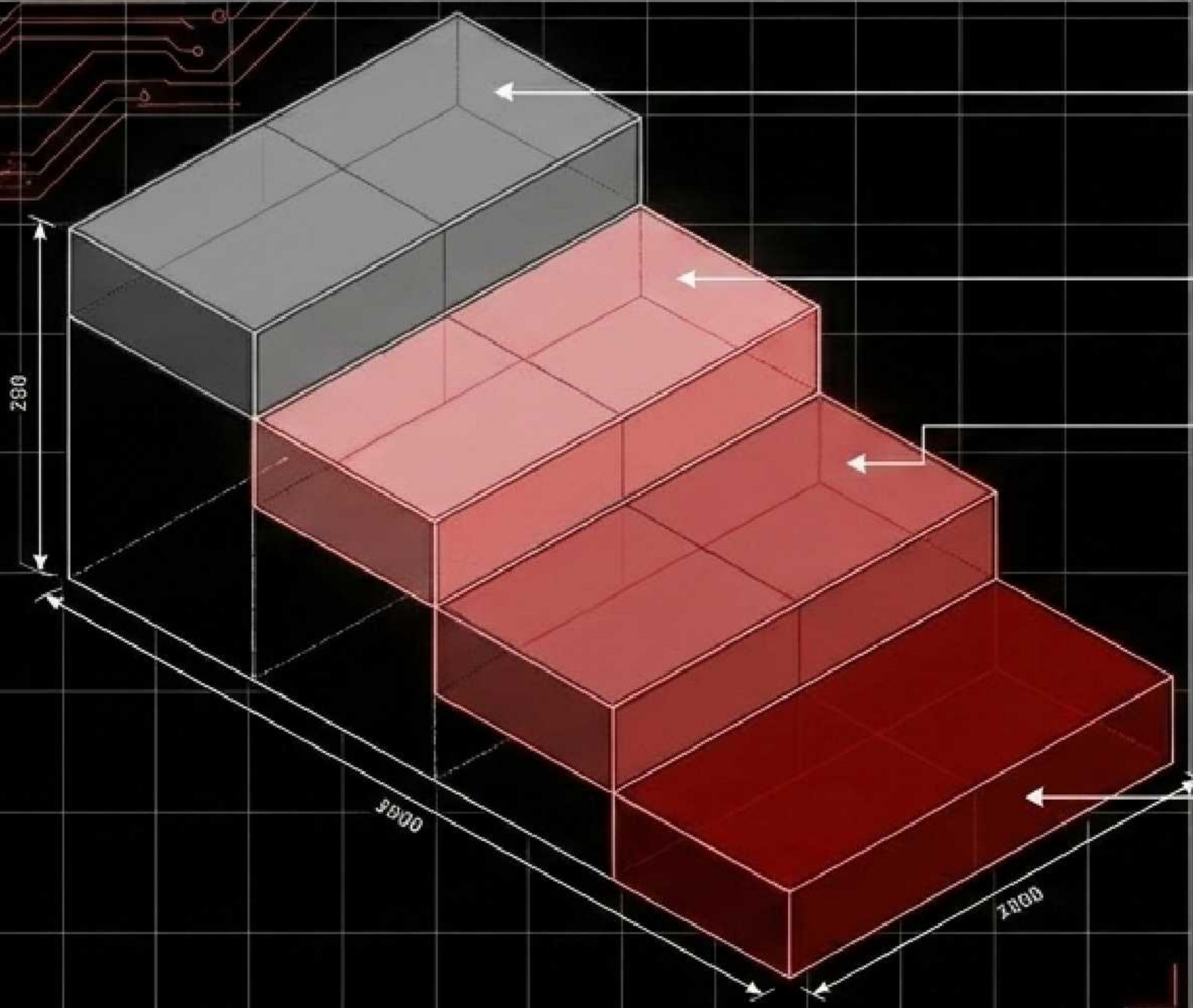
The Crash, Such Quiet Girls  
Visceral, physical panic. Have an  
inhaler ready.

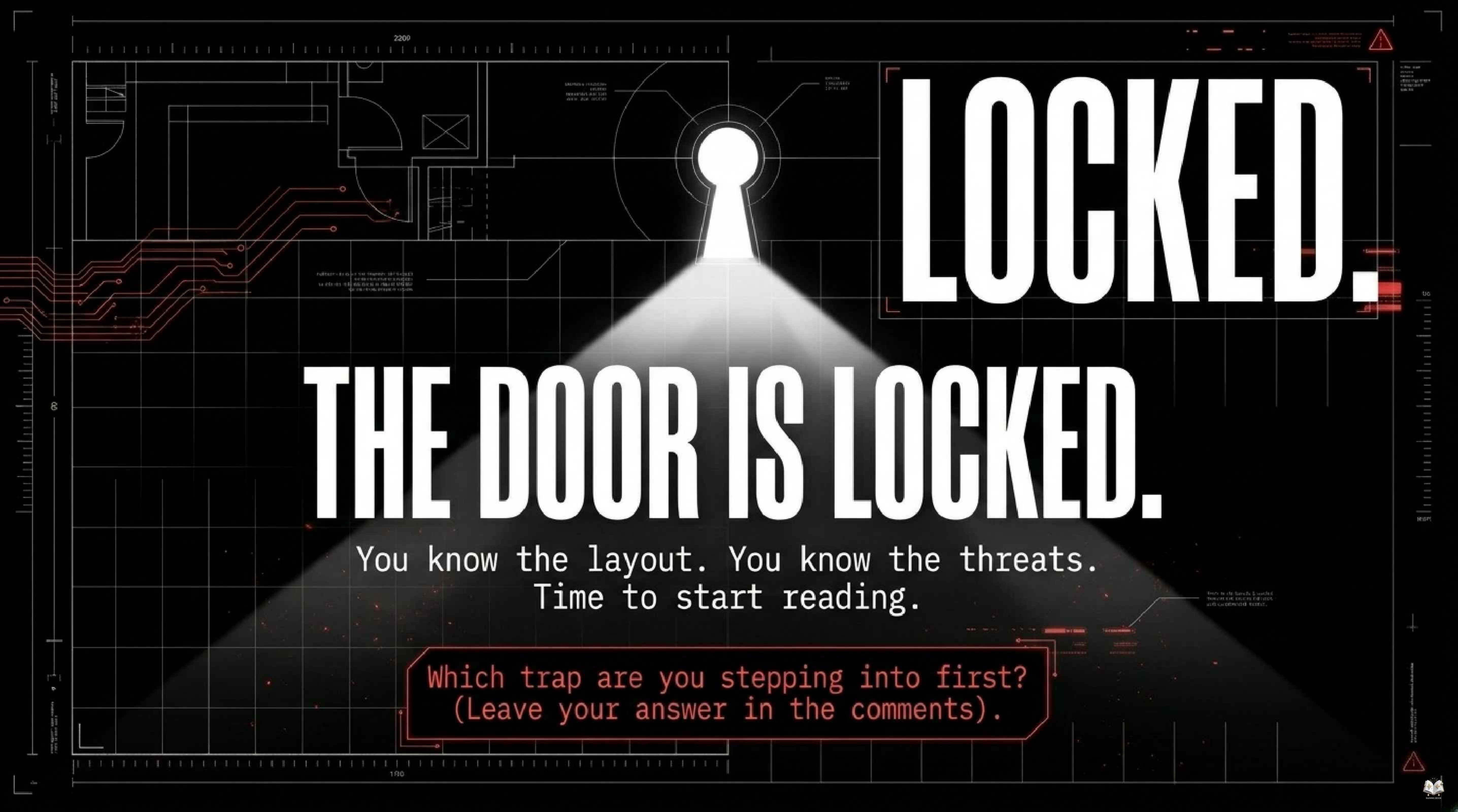
## Tier 3: Existential Dread

Cold Eternity, The Compound  
Lingering paranoia. You will look at  
your own family and the dark sky very  
differently.

## Tier 4: Soul Crushing

The Unworthy, On Earth as It Is Beneath  
Unflinching, brutal, devastating.  
Don't say we didn't warn you.





# LOCKED.

# THE DOOR IS LOCKED.

You know the layout. You know the threats.  
Time to start reading.

Which trap are you stepping into first?  
(Leave your answer in the comments).